

# ST. FRANCIS PREP FLU SURVEYS RESULTS

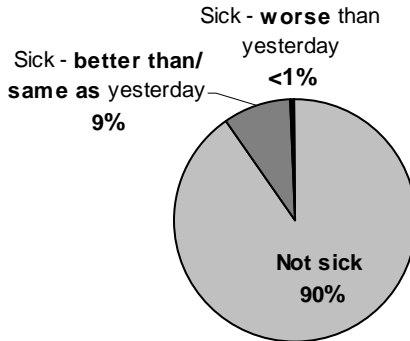
*Two Weeks, Two Surveys, GREAT Response Rates:  
2,225 students (83%) – 228 faculty/staff members (92%)*

## FACULTY/STAFF DATA – *Thanks for your participation!*

### One tenth of St. Francis Prep staff were sick with flu-like symptoms

- More than nine in ten St. Francis Prep staff (228) responded to at least one of the two flu surveys.
- One in ten staff members surveyed (10% or 22 staff) reported being sick with flu-like symptoms on or after April 18.
- Only one staff member reported being sick and feeling worse than the day before taking the survey. The Health Department followed up with this individual and determined that no additional care was required.

#### Flu-like illness among St. Francis staff members on or after April 18



#### DEFINITION OF “SICK”

Any staff member reporting the following symptoms anytime on or after April 18, 2009: fever AND either cough or sore throat. **Not all staff members with these reported symptoms had Influenza A H1N1 (swine flu).**

#### RESPONSE BY SURVEY

Survey 1: 210 staff (85%)  
Survey 2: 166 staff (67%)  
**Total: 228 staff (92%)**

# ST. FRANCIS PREP FLU SURVEYS RESULTS

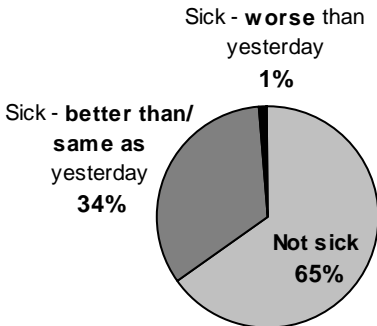
*Two Weeks, Two Surveys, GREAT Response Rates:  
2,225 students (83%) – 228 faculty/staff members (92%)*

## STUDENT DATA – *Thanks for your participation!*

### About one in three St. Francis Prep students were sick with flu-like symptoms

- More than four in five St. Francis Prep students (2,225) responded to at least one of the two flu surveys.
- Slightly more than one third of students surveyed (35% or 780 students) reported being sick with flu-like symptoms on or after April 18.
- Only 1% (26 students) reported being sick and feeling worse than the day before taking the survey. The Health Department followed up with these students and determined that no additional care was required.

#### Flu-like Illness among St. Francis students on or after April 18



#### DEFINITION OF “SICK”

Any student reporting the following symptoms anytime on or after April 18, 2009: fever AND either cough or sore throat. **Not all students with these reported symptoms had Influenza A H1N1 (swine flu).**

#### RESPONSE BY SURVEY

Survey 1: 1,996 students (74%)  
Survey 2: 1,529 students (57%)  
**Total: 2,225 students (83%)**

#### QUICK RECOVERY RATES

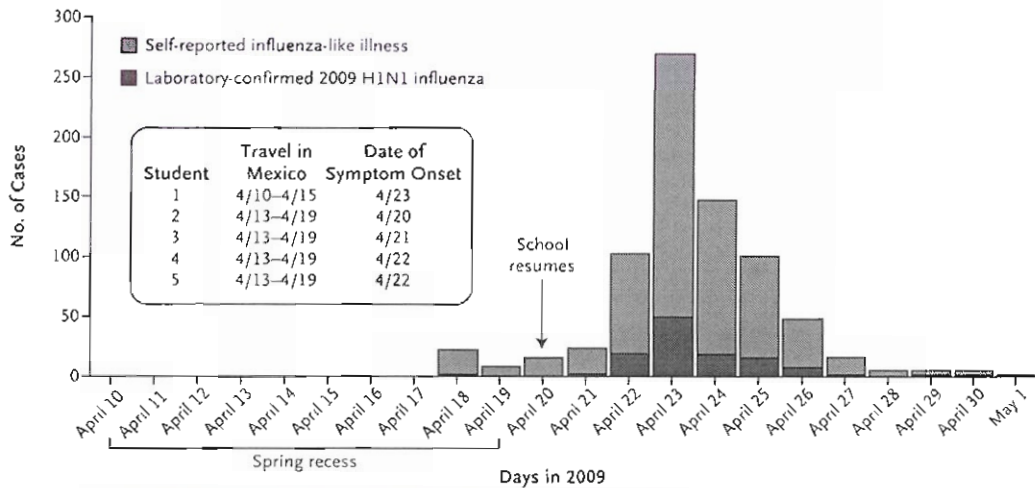


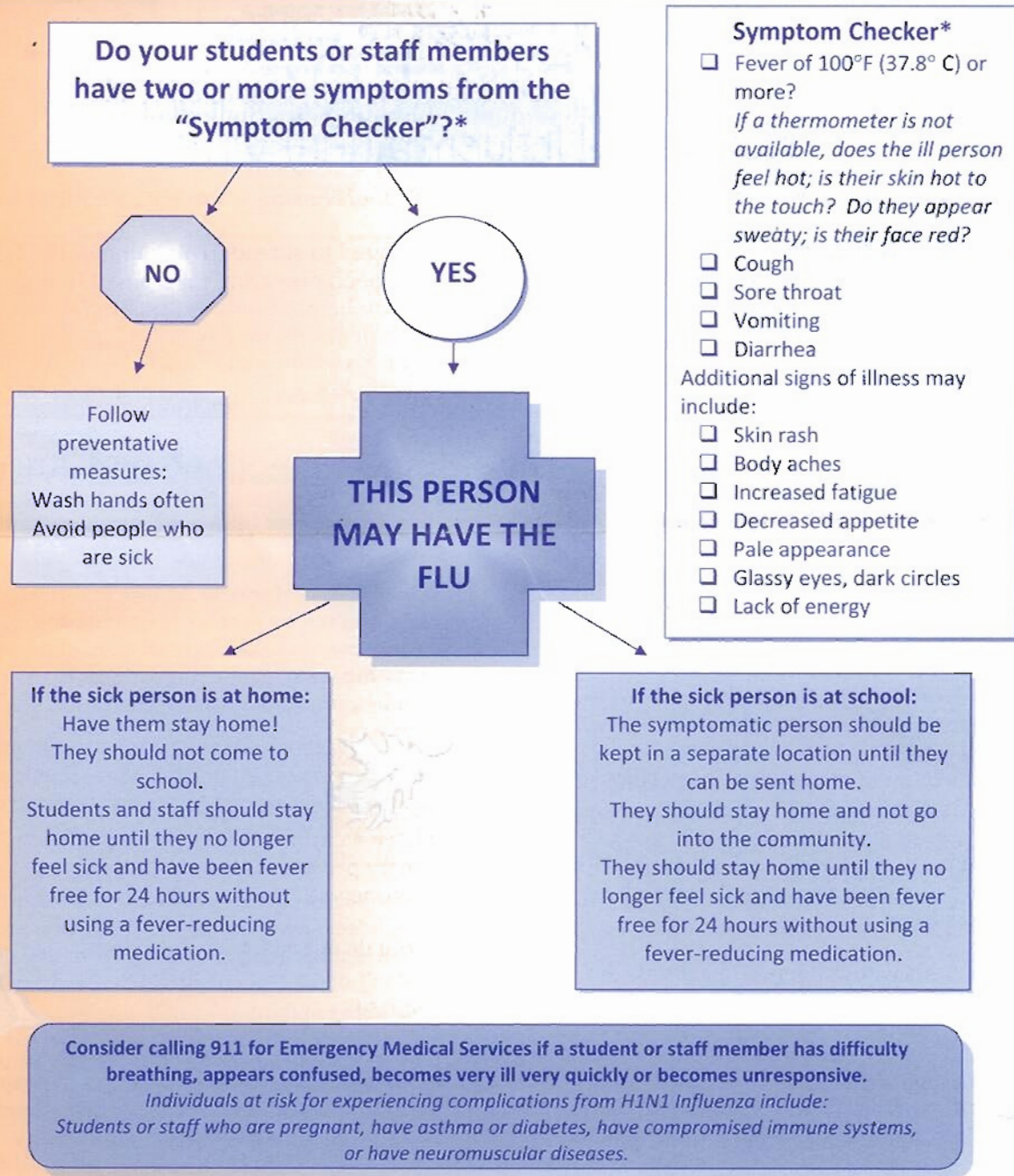
Figure 1. Number of Cases of Confirmed 2009 H1N1 Influenza and Self-Reported Influenza-like Illness among High-School Students and Employees, According to the Date of Onset of Illness.

Student 1 traveled alone; Students 2 through 5 traveled together.

# H1N1 Influenza A

## School Checklist

Available on the H1N1 page in full color.



\*The symptoms listed relate to H1N1 Influenza A. Students with one symptom may still be ill enough to be dismissed. Assessment by a Registered Professional School Nurse is always preferable.

If you have additional questions or concerns, please contact your School Medical Director or your local Health Department.

Developed by the New York Statewide School Health Services Center